



Kids Brain Doc

Dr. Laila Mohammad

Endoscopic Third Ventriculostomy (ETV)

Patient Packet



ETV Success Score

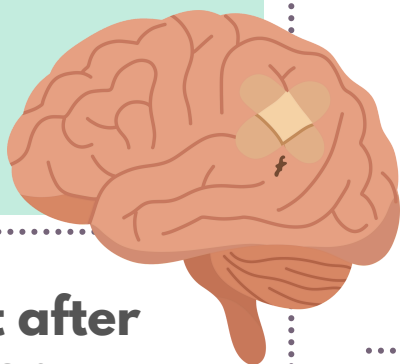
Score = AGE + ETIOLOGY + PREVIOUS SHUNT
 = Percentage Probability of ETV Success

Score	AGE	+	ETIOLOGY	+	PREVIOUS SHUNT
0	<1 Month		Post-Infectious		Previous Shunt
10	1 to <6 months				No Previous Shunt
20			MMC, IVH, Non-tectal brain tumor		
30	6 months to <1 year		Aqueductal stenosis, Tectal tumor, Other		
40	1 year to <10 years				
50	>= 10 years				

Surgery: Endoscopic Third Ventriculostomy (ETV)

1 Goals of Surgery

- Relieve fluid buildup and pressure in brain
- This is done by creating a "detour" or new pathway for the fluid to flow



2 Risks of Surgery

- Infection (give antibiotics before surgery), bleeding, headache, brain fluid leak, damage to brain
- Long-term: the ETV may fail and require a re-do or the need for a VP Shunt (permanent hardware)

3 Alternatives

- Ventriculoperitoneal (VP) Shunt – a straw that drains fluid from the head to the belly
- Observe – only if no signs of pressure

4 Right after Surgery

- Sitting with the head up to help the incision heal
- Pain medications: IV Tylenol, IV Toradol,
- Antibiotics: 24 hours
- Check labs



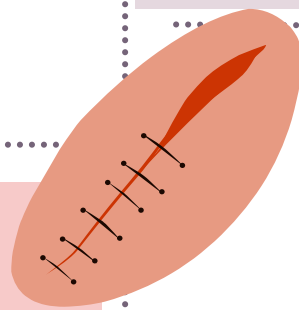
5 Hospital Recovery

- Once your child is taking all their medicine by mouth, eating/drinking, peeing, and moving ok, your child can go home

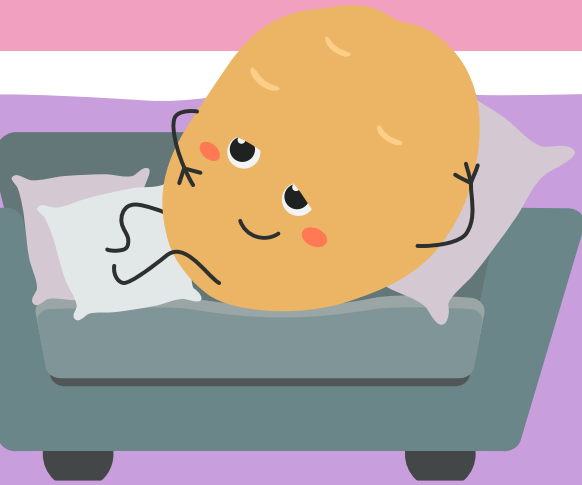


6 Incision Care

- Ok to shower 2 days after surgery. Wash daily
- No bathing or soaking incision in tub for 4 weeks after surgery
- Incision will fall off on it's own in 3-4 weeks
- No need to cover the incision



Recovery & Follow-Up



ACTIVITY RESTRICTIONS

- Week 0-2: Couch potato
- Week 0-4: Light activity
- 1-3 months: Regular activity (keeping two feet on the ground – avoid jumping)
- At 3-months: Clear for all activities

HOME CARE

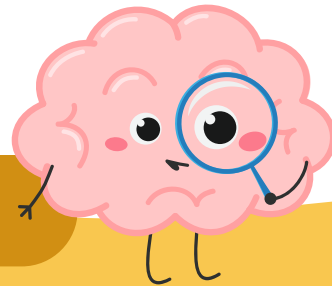
Will see in clinic for incision check at 2 weeks.
Can return to school or daycare after this appointment.

FOLLOW-UP

- 2-week: incision check
- 6-weeks
- 3 months
- Annual check-up



LONG-TERM CARE



- Return to sports: After 3 months, ok to return to non-contact sports
 - At 6 months, ok to return to contact sports
- Annual eye exams to rule out pressure build up in the optic nerve (*papilledema*) that could indicate increased pressure in the brain
- Most children will live normal, active lives once fully healed.